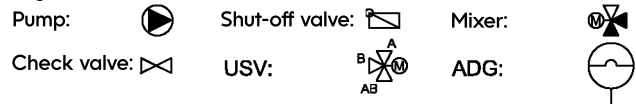
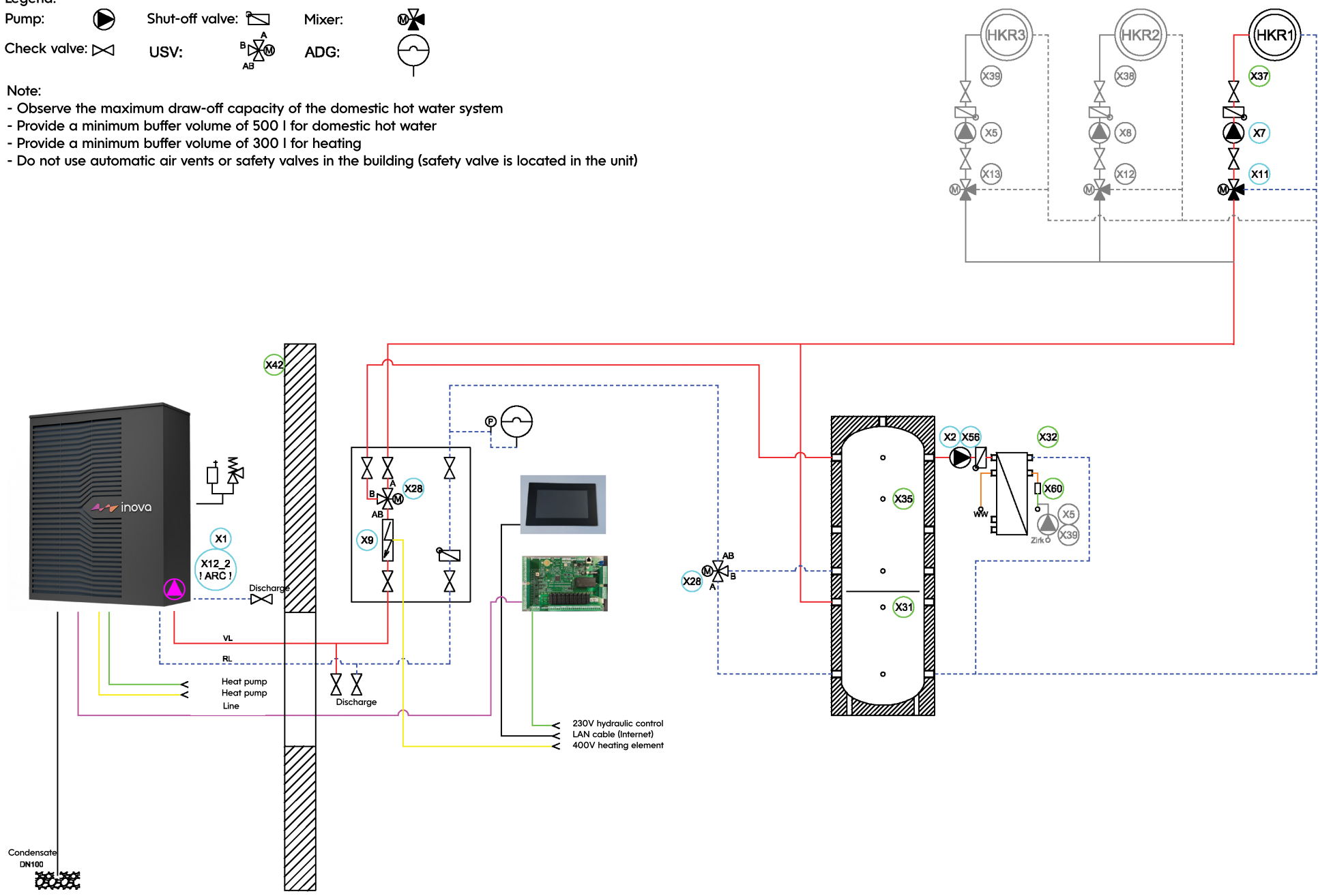


Legend:



Note:

- Observe the maximum draw-off capacity of the domestic hot water system
- Provide a minimum buffer volume of 500 l for domestic hot water
- Provide a minimum buffer volume of 300 l for heating
- Do not use automatic air vents or safety valves in the building (safety valve is located in the unit)



No guarantee of accuracy. This drawing represents a schematic diagram and may differ from actual practice. Reproduction is permitted only with written consent.

Designation:
Combination storage tank with fresh water system

Date: 24.02.2026

Name: Inova